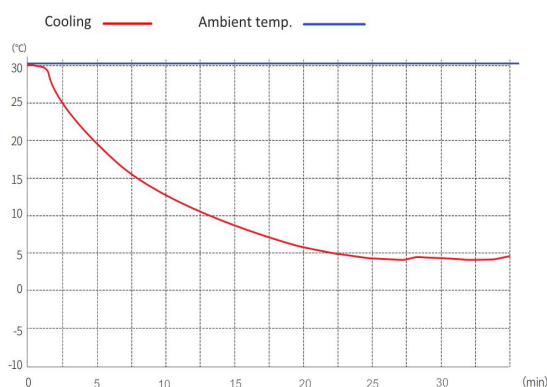


MPC-5V415

2~8 °C Pharmacy Refrigerator



MPC-5V415 2~8°C Pharmacy Refrigerator (415 liter) is widely used in hospitals pharmacy stores and laboratories. This is for placing and preserving storage such as drugs, vaccines, enzymes, hormones, stem cells, extracted RNA and gene libraries and important biological and chemical reagents.



MPC-5V415 Pull Down Curve

FEATURERS



Fast pull down

Real forced air cooling system



2 temp. simulation boxes

Accurately detect the temperature of



Suction circulation system

2 big fans with less temp. fluctuation & better uniformity



Universal castor wheels

Proven heavy-duty lockable castors



Lockable doors

3 Standard locks with keys for 3 doors



High-quality steel materials

Antibacterial and corrosion resistant



Precise temp. control

Temp. control accurate to 0.1°C



7 types of alarm

Audible and visual alarms



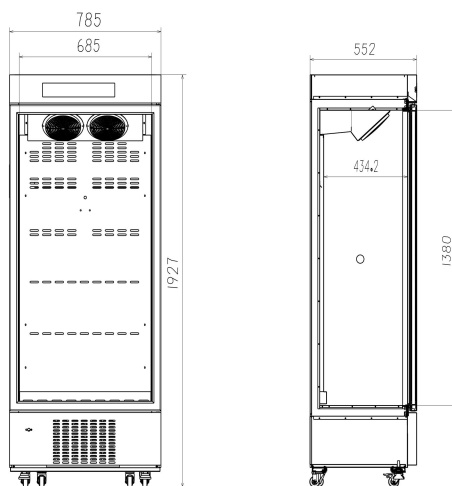
Variable space

Adjustable shelves and basket



Eco-friendly

CFC-free refrigerant and energy-saving



STRUCTURE

Temp. simulation box is used to simulate the real temperature inside the storage. So that the temperature measured by the probe is closer to the actual temperature of the contents in the cabinet.

Optional Accessories

USB interface
Data logger
Solid door

High-precision control system

**LED lighting
Big Suction fan**

2 temp. simulation boxes

Standard Lock&key

**Lockable castors
Leveling feet**

USB Interface

Heated glass for quick defogging

Self closing door



High/low temp. alarm

Condenser fault alarm

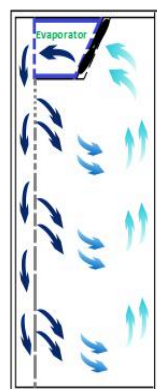
Backup battery failure alarm

Thermostat failure alarm

Door ajar alarm

Power failure alarm

Ambient Temperature



Real forced air circulation and excellent refrigeration system pull down the chamber temperature from 25°C to 5°C in 26 minutes (at ambient temp. 25°C). And keep the chamber with good temperature uniformity

PARAMETER

Performance		Refrigeration System		Alarms	
Cooling method	Forced Air Cooling	Refrigerant	R290	High/low temperature	Y
Defrost	Auto	Temp. controller	Microprocessor	Power failure	Y
Shelf/drawer	6/1	Sensor	NTC	Thermostat failure	Y
Temperature range	2°C~8°C	Display	Digital display	Backup battery failure	Y
Ambient temperature	10~32°C	External material	SPCC sprayed steel	Door ajar	Y
NT./GT.	120/133	Capacity (L/cu.ft)	416/14.7	Ambient Temperature	Y
Noise (db)	50	Compressor QTY	1	Condenser fault	Y
Electrical Data		Dimensions		Other	
Voltage frequency(V/Hz)	220V 50Hz/60Hz	Package size(W*D*H)(mm)	890*655*2100	Inside door	6 shelves + 1 basket
Power (W)	280W	Exterior size(W*D*H)(mm)	800*552*1940	Remote alarm port	Optional
Current (A)	1.7A	Interior size(W*D*H)(mm)	685*429*1380	Access port QTY/Dia.	1/25mm
Power consumption	3.97kWh/24h	CBM	1.22	Internal material	SPCC sprayed steel