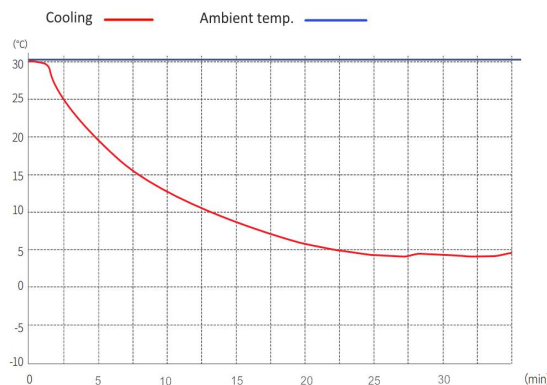


# MPC-5V315

## 2~8 °C Pharmacy Refrigerator



**MPC-5V315** 2~8°C Pharmacy Refrigerator (315 liter) is widely used in hospitals pharmacy stores and laboratories. This is for placing and preserving storage such as drugs, vaccines, enzymes, hormones, stem cells, extracted RNA and gene libraries and important biological and chemical reagents.



MPC-5V316 Pull Down Curve

## FEATURERS



### Fast pull down

Real forced air cooling system



### 2 temp. simulation boxes

Accurately detect the temperature of



### Suction circulation system

Big fans with less temp. fluctuation & better



### Universal castor wheels

Proven heavy-duty lockable castors



### Lockable doors

3 Standard locks with keys for 3 doors



### High-quality steel materials

Antibacterial and corrosion resistant



### Precise temp. control

Temp. control accurate to 0.1°C



### 7 types of alarm

Audible and visual alarms



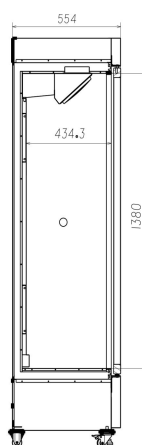
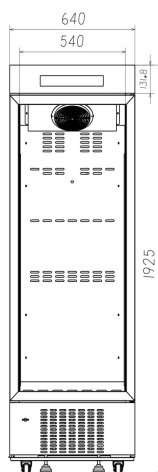
### Variable space

Adjustable shelves and basket



### Eco-friendly

CFC-free refrigerant and energy-saving



## STRUCTURE

**Temp. simulation box** is used to simulate the real temperature inside the storage. So that the temperature measured by the probe is closer to the actual temperature of the

### Optional Accessories

USB interface  
Data logger

High-precision control system

LED lighting  
Big Suction fan

Temp. simulation box

Standard Lock&key

Lockable castors  
Leveling feet

USB Interface

Heated glass for quick defogging

Self closing door



High/low temp. alarm

Condenser fault alarm

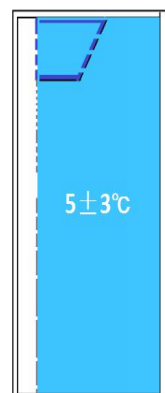
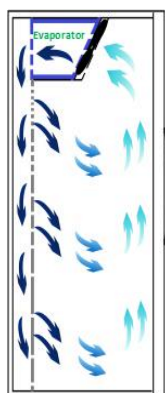
Backup battery failure alarm

Thermostat failure alarm

Door ajar alarm

Power failure alarm

Ambient Temperature



Real forced air circulation and excellent refrigeration system pull down the chamber temperature from 25°C to 5°C in 26 minutes (at ambient temp. 25°C). And keep the chamber with good temperature uniformity and fluctuation.

## PARAMETER

Performance		Refrigeration System		Alarms	
Cooling method	Forced Air Cooling	Refrigerant	R290	High/low temperature	Y
Defrost	Auto	Temp. controller	Microprocessor	Power failure	Y
Shelf/drawer	Shelves/5	Sensor	NTC	Thermostat failure	Y
Temperature range	2°C~8°C	Display	Digital display	Backup battery failure	Y
Ambient temperature	10~32°C	External material	SPCC sprayed steel	Door ajar	Y
NT./GT.	92.5/100	Capacity (L/cu.ft)	315/11.15	Ambient Temperature	Y
Noise (db)	50	Compressor QTY	1	Condenser fault	Y

Electrical Data		Dimensions		Other	
Voltage frequency( V/Hz)	220V 50Hz/60Hz	Package size(W*D*H)(mm)	710*640*1970	Inside door	6 shelves + 1 basket
Power (W)	216W	Exterior size(W*D*H)(mm)	660*555*1915	Remote alarm port	Optional
Current (A)	1.46A	Interior size(W*D*H)(mm)	540*425*1380	Access port QTY/Dia.	1/25mm
Power consumption	2.8kWh/24h	CBM	0.9	Internal material	SPCC sprayed steel