

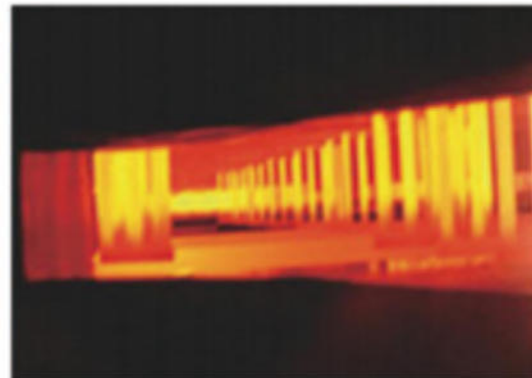
1400°C Chamber Muffle Furnace

Features

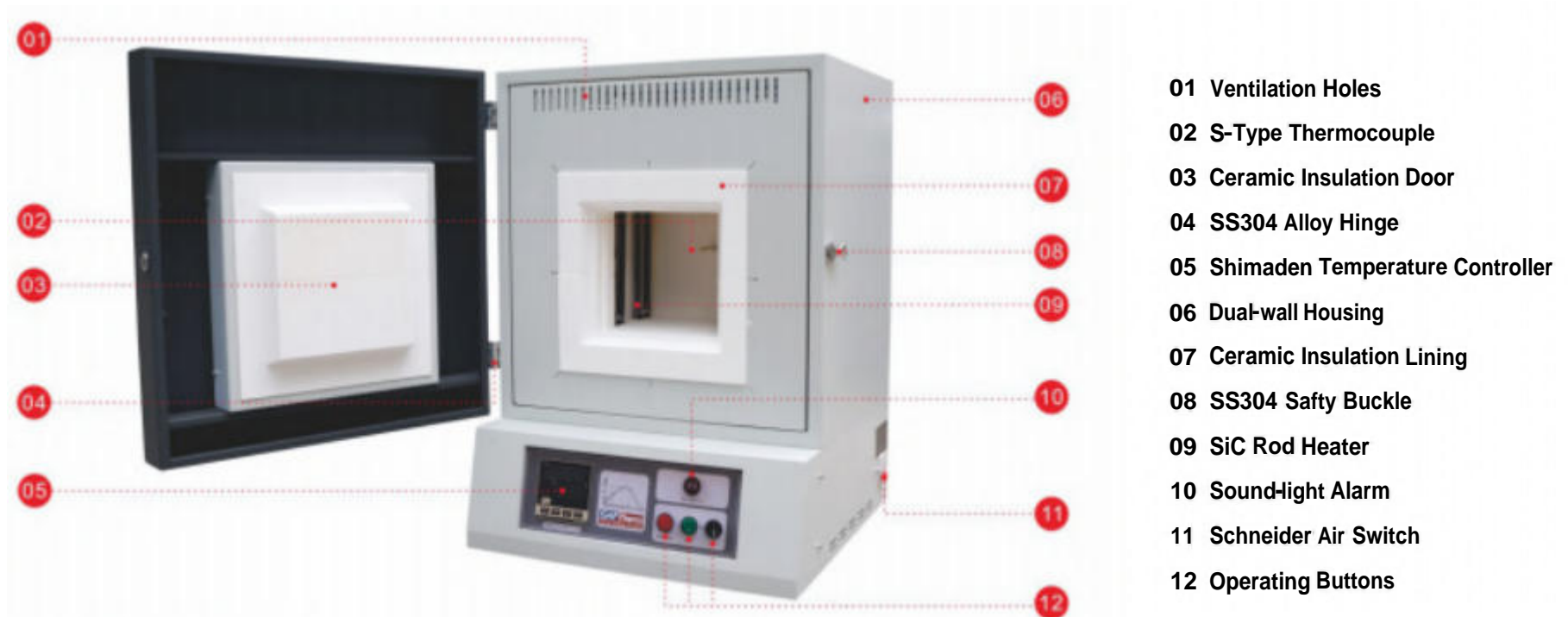
- Integrated Structure with elegant design
- Chamber Materials: Vacuum forming ceramic fiber, which has the advantage of no powder drops off with high temperature , and saving energy more than 50%.
- SHIMADEN (Japan) Microprocessor based self-tuning PID control provides optimum thermal
- Long life type S thermocouple.
- CE compliant
- Built-in RS485 port and USB adaptor as optional setting for computer control . it need to add extra fees .



SiC Heating Element



Furnace Inner Picture



Specifications

Model	STM-3-14	STM-8-14	STM-12-14	STM-18-14	STM-27-14	STM-36-14	OEM
Inner Dimension (WxDxH) mm	150x150x150	200x200x200	200x300x200	250x300x250	300*300*300	300x400x300	Any size
Outer Dimension (WxDxH) mm	490x530x750	575x580x825	590x680x835	610x700x860	650*670*900	650x770x900	
Type	Benchtop						
Furnace structure	Alumina Ceramic Chamber, Temperature control system, Heating element, Furnace shell ,Main Electric Parts and other relative accessories						
Max temperature	1400°C						
Continue Temp.	1300°C						
Power supply	220V/3KW	220V/5KW	220V/5KW	220V/6KW	380V/9KW	380V/12KW	
Heating element	High quality Silicon Carbide Rod (SIC) heater						
Chamber material	High temperature 1500 Type polycrystal alumina ceramic fiber material						
Temp precision	±1°C						
Thermocouple	S type						
Temp controller	SHIMADEN (Japan) brand intelligent microcomputer PID controller can program 4 groups 32 segments						
Electronic Parts	SCHNAIDER (France) electronics brand						
Heating rate	≤ 25°C/min (suggest 15°C/min for longer life using of furnace)						
Safety protection	Overheat and thermocouple-break alarm						
Certification	ISO9001 CE SGS						
Furnace shell	High quality cold-rolled steel sheets CNC processing						
Insulation	High quality thermal insulation material to ensure a good uniformity						
Accessories	One pair of high temperature gloves , One pair of crucible tong , one catalog and operation manual						
Optional	Paperless recorder , Stainless steel exhaust chimney , Quartz /Alumina crucible						