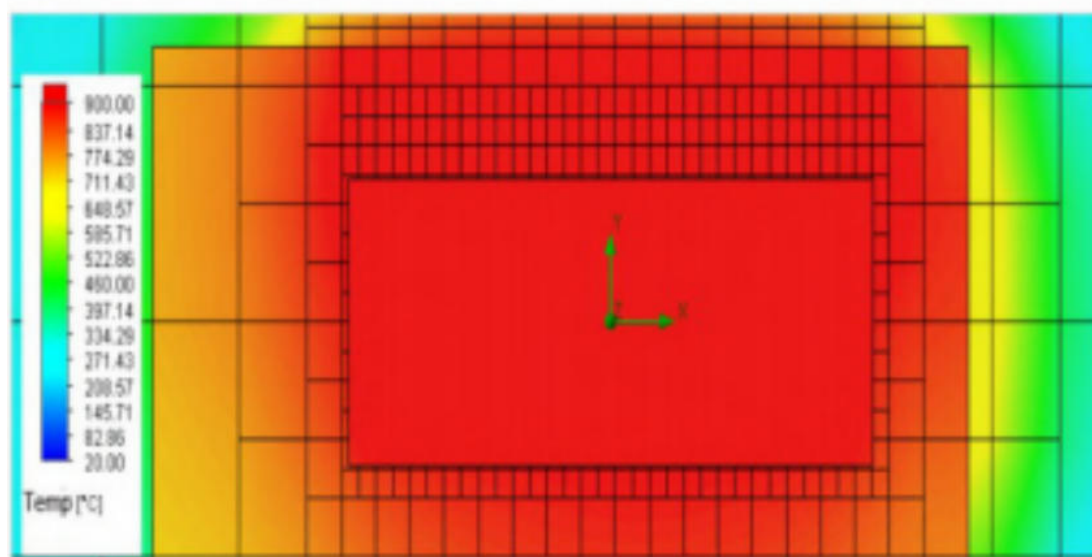


1200°C Chamber Muffle Furnace

Features

- Integrated Structure with elegant design
- Chamber Materials: Vacuum forming ceramic fiber, which has the advantage of no powder drops off with high temperature , and saving energy more than 50%.
- SHIMADEN (Japan) Microprocessor based self-tuning PID control provides optimum thermal
- Long life type N thermocouple.
- CE compliant
- Built-in RS485 port and USB adaptor as optional setting for computer control . it need to add extra fees .



Heat Distribution Profile Diagram



Specifications

Model	STM-1-10	STM-3-12	STM-6-12	STM-8-12	STM-12-12	STM-18-12	STM-30-12	OEM
Inner Dimension (WxDxH) mm	100x100x100	150x150x150	180x230x150	200x300x120	200x300x200	250x300x250	300x500x200	Any size
Outer Dimension (WxDxH) mm	250x240x350	430x465x620	460x570x660	480x630x630	480x630x710	550x635x780	600x870x735	
Type	Benchtop							
Furnace structure	Alumina Ceramic Chamber, Temperature control system, Heating element, Furnace shell, Main Electric Parts and other relative accessories							
Max temperature	1000°C	1200°C						
Continue Temp.	950°C	1100°C						
Power Supply	220V/1.2KW	220V/2.5KW	220V/3KW	220V/3KW	220V/4KW	220V/6KW	380V/7.5KW	
Heating Element	High quality alloy resistance wire (HRE)							
Chamber Material	High temperature polycrystal alumina ceramic fiber plate							
Temp Precision	±1°C							
Thermocouple	N type							
Temp controller	SHIMADEN (Japan) brand intelligent microcomputer PID controller can program 4 groups 32 segments							
Electronic Parts	SCHNAIDER (France) electronics brand							
Heating rate	≤ 25°C/min (suggest 15-20°C/min for longer life using of furnace)							
Safety protection	Overheat and Thermocouple-break Alarm							
Certification	ISO9001 /CE/ SGS							
Furnace shell	High quality cold-rolled steel sheets CNC processing							
Insulation	High quality thermal insulation material to ensure a good uniformity							
Standard Packing	One pair of high temperature gloves , One pc crucible tong , one catalog and operation manual							
Optional	Paperless recorder , Stainless steel exhaust chimney , Quartz /Alumina crucible							