

DW-TC6090 Automatic Chemistry Analyzer

Features

- Fully automatically, discrete, random STAT function
- Online test items: at most 80 testing items
- Throughput: 400 tests/hour
- Analysis Method: end-point, kinetic, two-point, double-reagents, double-wavelength, multi-standard etc, open to various reagents
- Data Processing memory up to 2 million patients' data

Sample/Reagents Handling

- Sample Position: 93 pcs (Include standard, QC, STAT positions)
- Sample volume: 2-50 μ l, 0.1 μ l step
- Sample Probe Cleaning: automatic internal & external washing - Sample Dilution: automatic/Manual pre-dilution, with dilution ratio up to 1:100
- Reagent Position: 80 pcs (With refrigerated function, 2-8)
- Reagent Volume: 10-500 μ l, 1 μ l step
- Reagent Probe: automatic liquid level detect, with collision protection function
- Reagent Probe Cleaning: automatic internal & external washing

Reaction System

- Reaction Cuvette: 90 pcs made of reusable plastic
- Optical Length of Cuvette: 6mm
- Reaction Volume: 200-500 μ l
- Reaction Time: 8-14 minutes
- Reaction Temperature: 37 ± 0.1 °C
- Mixing System: two independent mixing stirrer

Optical System

- Light Source: halogen-tungsten lamp
- Wavelength: 340-750nm, 12 wavelengths, precision ± 2 nm - Spectrophotometry: rear spectrophotometry
- Test Range: 0-4.0 Abs
- Resolution: 0.001 Abs

Bar-code Reader (Optional)

- Bar-code reader used for sample/reagent programming

ISE Module (Optional)

- Optional 1: K, Na, Cl, Ca, PH (5 items)
- Throughput: 300 tests/hour
- Optional 2: K, Na, Cl (3 items)
- Throughput: 180 tests/hour

QC

- Various QC management function and random QC insert

Control and Calibration

- Calibration: linear/nonlinear multi-points calibration
- Re-test: retest the sample automatically when the result is out of the linearity range or the sample is not sufficient
- Automatic sample dilute function



Washing System

- 8-step automatic washing, automatic cuvette dry function - Water Consumption: 8L/hour

Working Condition

- Power Supply: $\sim 100-240$ V, 50/60Hz, 1KVA
- Temperature: 10-35 °C
- Humidity: 90%, no dew

Operation System

Windows 7 or higher

Input and Output

- Input: RS-232 interface / keyboard / computer
- Output: multi-format printout

Dimension and Weight

- Instrument: 950x710x1180mm
- Weight: 136kgs

Packing Information

- G.W.: 215kgs



R1 Reagent Position

- 40 R1 reagent positions
- Non-stop reagents refrigerating
- Auto detect of reagent volume



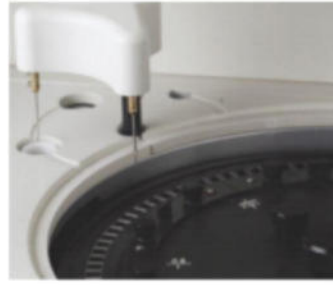
R2 Reagent/Sample position

- 40 R2 reagent positions
- 93 sample positions
- primary tube abd serum cup - Non-stop reagents cooling
- Auto detect of reagent volume



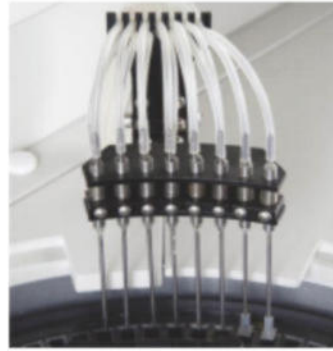
Sample/Reagent Probe

- Probe teflon coating technology
- Automatic liquid level detect
- Collision protection function
- Independent mixing stirrer
- Probe internal/external washing



Reaction Cuvettes

- 90 reusable cuvettes
- Automatic blank testing for cuvette
- Demountable, easy to replace Cuvette
- Advanced thermostat to ensure accurate test result



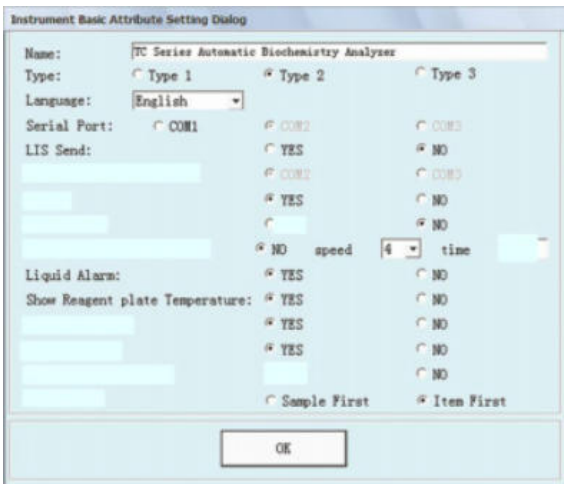
8-step Auto Washing System

- Automatic 8-step washing
- Automatic cuvette dry function
- Hi-tech washing station to ensure accurate test results
- With low water consumption:8L/H



Mixing Probe

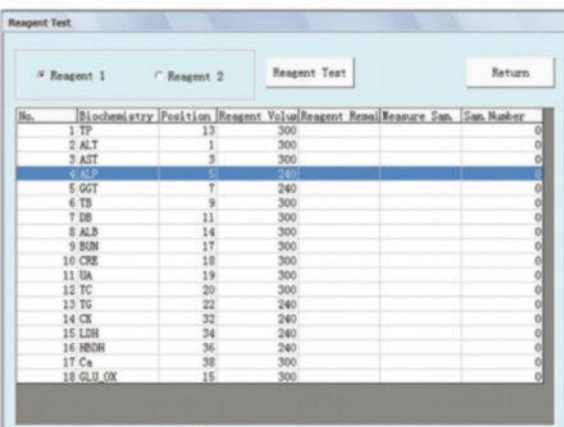
- Two independant mixing stirrer
- High precision mixing station
- Collision protection function
- Probe internal/external washing
- Probe teflon coating technology



- Automatic washing cuvette when start up & shut down
- Test order setting program is available to avoid carry-over
- Automatic detect reagent volume during every startup
- Show reagent plate temperature during every startup

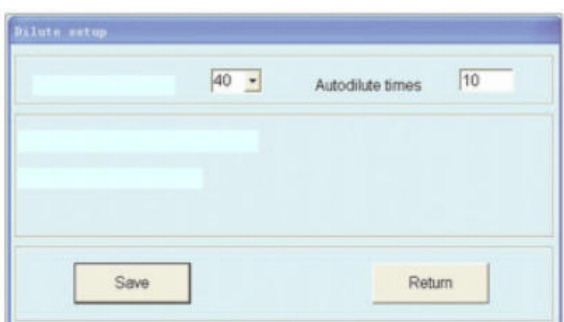
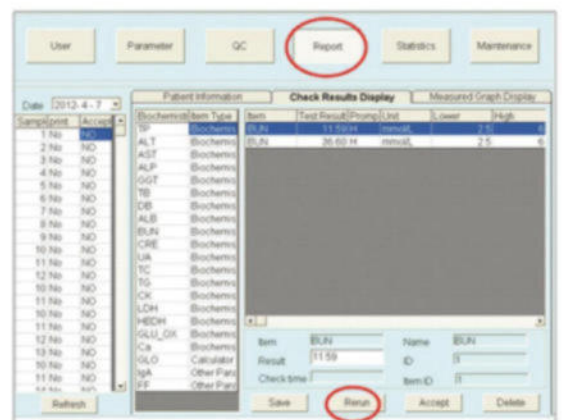
Automatic Cuvette blank testing -
Automatic wash selected cuvettes -

Real-time online monitoring running status of cuvettes -



- Real-time online monitoring running status of sample tray, reagent tray and cuvette
- Real-time online monitoring reagents residual volume
- Real-time online monitoring waste volume

- Freely set the autodilute ratio when re-testing -
Re-testing mode is available -



- Automatic dilute and re-test when absorbance range is overrange
- Automatic dilute and re-test when linear limit is overrange
- Three modes(no dilute, autodilute and pre dilute)are available
- Freely set the autodilute ratio and dilute water position