

DW-TC6030 Automatic Chemistry Analyzer

Features

- Fully automatically, discrete, random STAT function
- Online test items: at most 40 testing items
- Throughput: 260 tests/hour
- Analysis Method: end-point, kinetic, two-point, double - reagents, double-wavelength, multi-standard etc, open to various reagents
- Data Processing memory up to 200,000 patients' data

Sample/Reagents Handling

- Sample Position: 40 pcs (Include standard, QC, STAT positions) - Sample volume: 2-50 μ l, 0.1 μ l step
- Sample Probe Cleaning: automatic internal & external washing - Sample Dilution: automatic/Manual pre-dilution, with dilution ratio up to 1:100
- Reagent Position: 40 pcs (With refrigerated function, 2 - 8) - Reagent Volume: 10-500 μ l, 1 μ l step
- Reagent Probe: automatic liquid level detect, with collision protection function
- Reagent Probe Cleaning: automatic internal & external washing

Reaction System

- Reaction Cuvette: 90 pcs made of reusable plastic
- Optical Length of Cuvette: 6mm
- Reaction Volume: 200-500 μ l
- Reaction Time: 8-10 minutes
- Reaction Temperature: 37 \pm 0.1
- Mixing System: independent mixing stirrer

Optical System

- Light Source: halogen-tungsten lamp
- Wavelength: 340-690nm, 9 wavelengths, precision \pm 2nm - Absorbance Range: 0-4.0 Abs
- Resolution: 0.001 Abs
- Spectrophotometry: rear spectrophotometry

QC

- Various QC managements, insert QC randomly; save, display & print QC chart; define different QC in advance Calibration
- Calibration: linear/nonlinear multi-points calibration
- Re-test: retest the sample automatically when the result is out of the linearity range or the sample is not sufficient

Washing System

- 8-step automatic washing, automatic cuvette dry function - Water Consumption: 4L/hour

Working Condition

- Power Supply: \sim 100-240V, 50/60Hz, 1KVA

Operation System

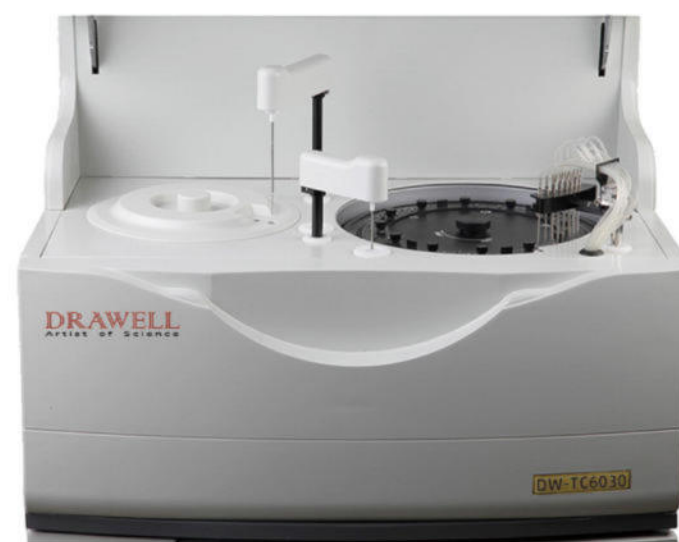
Windows 7 or higher

Input and Output

- Input: RS-232 interface / keyboard / computer
- Output: multi-format printout

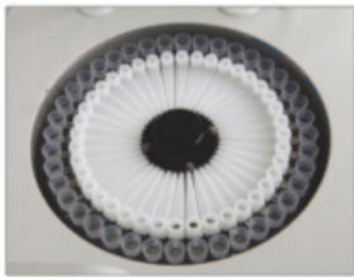
Dimension and Weight

- Instrument: 700x650x530mm, Weight: 62kgs
- Bottom cabinet: 700x705x620mm, Weight: 47kgs



Packing Information

- Adopts wooden case
- Upper Cabinet G.W.: 95kgs
- Bottom Cabinet G.W.: 74kgs



Sample/Reagent Position

- 40 sample positions
- 40 reagent positions
- Reagents cooling function
- Primary tube and blood serum cup can be used



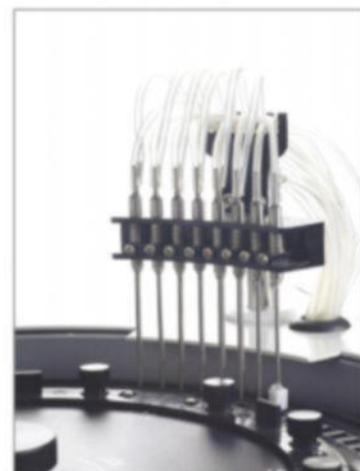
Reaction Cuvettes

- 90 reusable cuvettes
- Automatic blank testing for cuvette - Colorimetry system in the pattern of light splitting behind cuvette
- Dismountable, easily replace cuvette



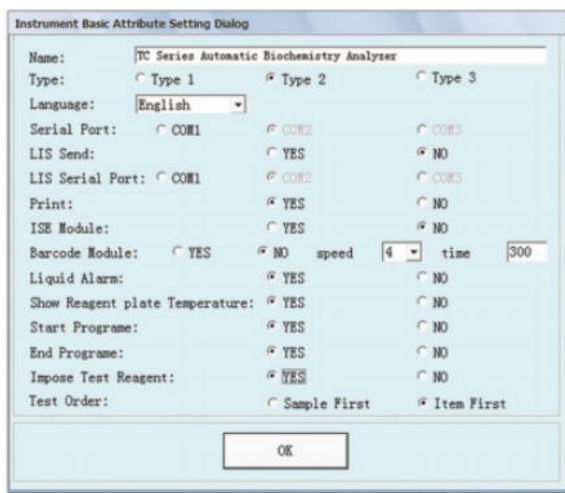
Sample/Reagent/Mixing Probe

- Probe teflon coating technology - Automatic liquid level detect
- Collision protection function
- Independent mixing stirrer
- Probe internal/external washing - Clot detection function



8-step auto washing System

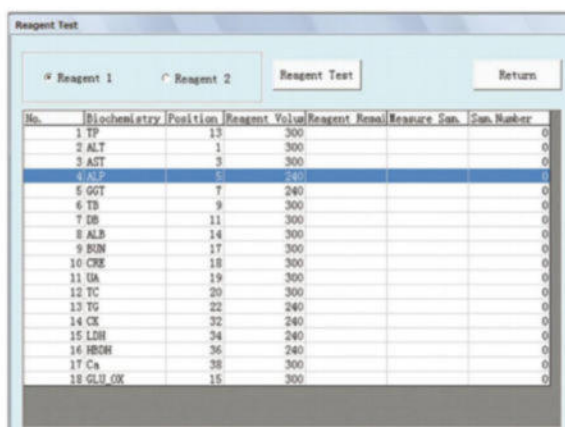
- Automatic 8-step washing
- Automatic cuvette diy function
- Hi-tech washing station to ensure accurate test results
- With low water consumption: 4L/H



- Automatic washing cuvette when start up & shut down
- Test order setting program is available to avoid carry-over
- Automatic detect reagent volume during every startup
- Show reagent plate temperature during every startup

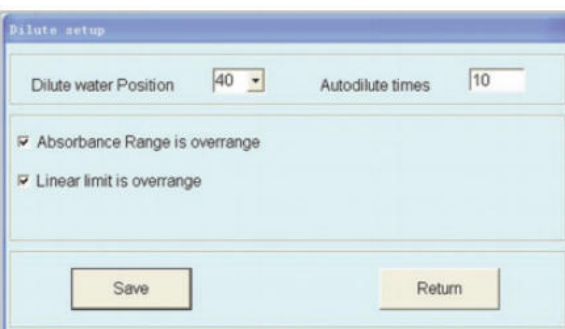
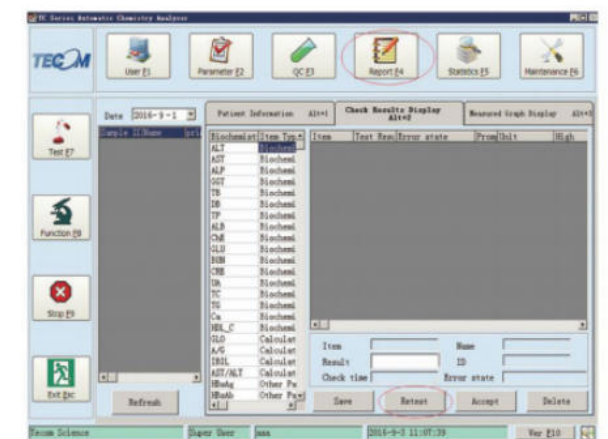
Automatic Cuvette blank testing -
Automatic wash selected cuvettes -

Real-time online monitoring running status of cuvettes -



- Real-time online monitoring running status of sample tray, reagent tray and cuvette
- Real-time online monitoring reagents residual volume - Real-time online monitoring waste volume

Freely set the autodilute ratio when re-testing -
Re-testing mode is available -



- Automatic dilute and re-test when absorbance range is overrange
- Automatic dilute and re-test when linear limit is overrange
- Three modes(no dilute, autodilute and pre dilute)are available
- Freely set the autodilute ratio and dilute water position